

FITMENT INSTRUCTIONS

AWNING TO FRONT RUNNER ROOF RACK

TOOLS REQUIRED:

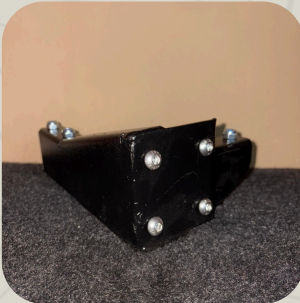
- 13 mm Spanner
- Size 4 Allen key

**Please note that this is for a longer roof rack. (SUV and Mini Busses)*

TO FIT

Please use the images as a reference to help you fit the Awning to a Front Runner roof rack.

1. Open the bracket box and unwrap the brackets. Be careful to not cut the brackets whilst unwrapping them.

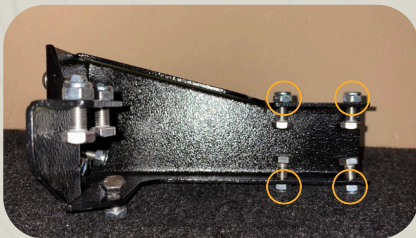


2. Remove the Nuts and Bolt that are supplied with the both brackets.



3. Remove both of the Front Runner corner caps. On the side you will be mounting the awning.

NB: BRACKETS ARE LEFT AND RIGHT SIDE DEPENDEND!



Right hand side bracket

4. USING THE CORNER BRACKET

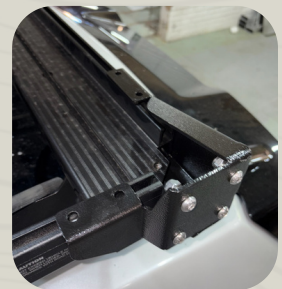
Use the 4 x M8 Nuts provided with the brackets and insert two (2) nuts in both the top and bottom rail of the roof rack at the back of the vehicle.

5. Fitting the corner bracket

Use the 3 x M8 Nuts provided with the brackets and insert two (2) nuts in the top and one (1) in the bottom rail of the roof rack at the side of the vehicle.



Right hand side bracket



Left-hand side bracket fitted

6. Fitting the corner bracket

When all seven (7) nuts are inserted in the roof rack, refit the roof rack corner cap and place the bracket over the corner to align the nuts with the holes of the bracket. When the nuts align with the holes, use the 7 remaining M8 bolts to tighten the bracket onto the roof rack.

7. Using the front bracket

Use the 4 x M8 Nuts provided with the brackets and insert two (2) nuts in both the top and bottom rail of the roof rack at the side of the vehicle.



Bracket with nuts



Bracket on Roof rack



8. Using the front bracket

When all four (4) nuts are inserted in the roof rack, refit the roof rack corner cap and place the bracket over the corner to align the nuts in the holes of the bracket.

9. Fastening the front bracket

When the nuts align with the holes in the bracket, use the remaining 4 x M8 bolts to fasten the bracket.

When the bracket is fastened you can fit the awning to the bracket. See Awning firmment instructions.



PLEASE DON'T HESITATE TO CONTACT US IF YOU NEED ANY SUPPORT REGARDING THE FITMENT.
THANK YOU FOR YOUR SUPPORT, WE HOPE YOU LOVE YOUR QUICK PITCH PRODUCT.